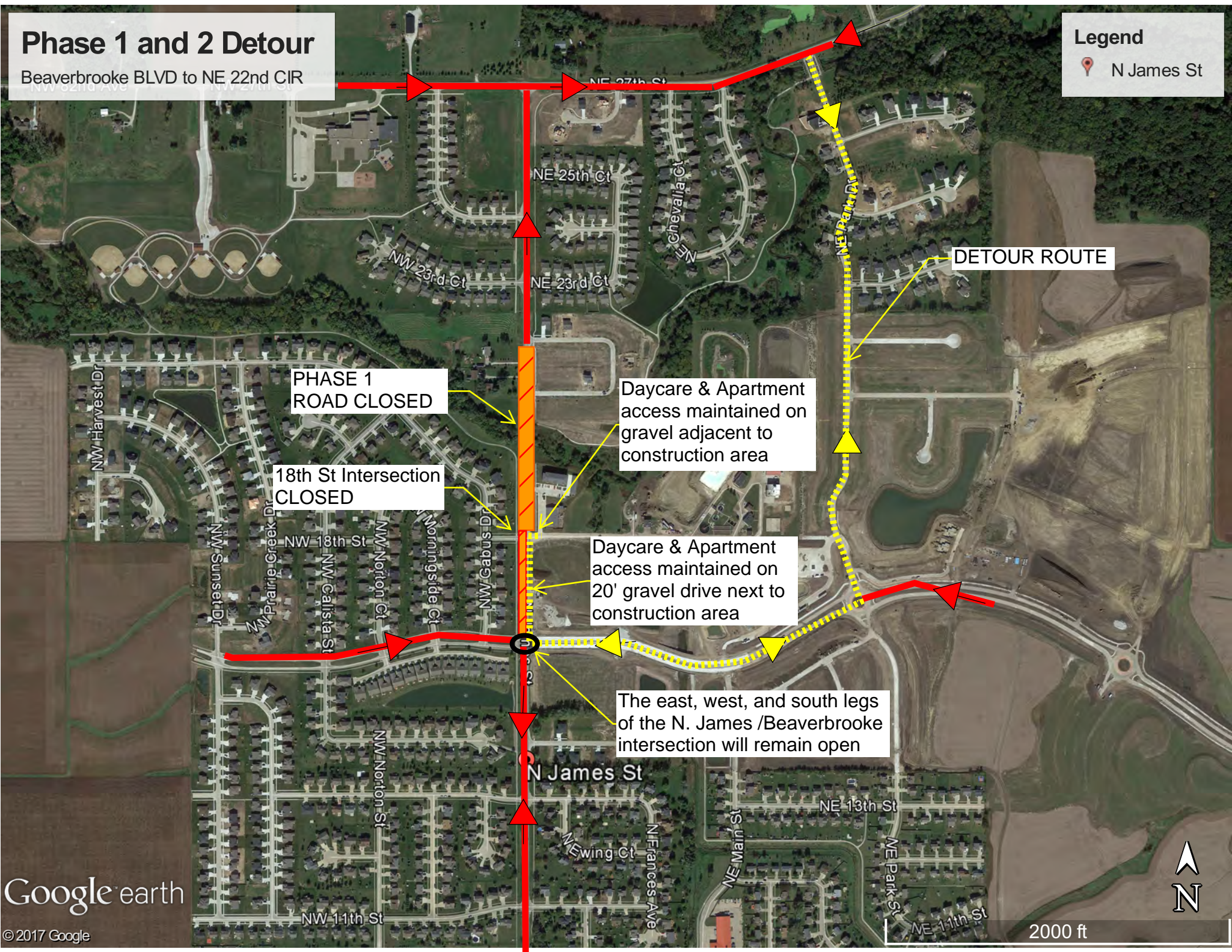


Phase 1 and 2 Detour

Beaverbrooke BLVD to NE 22nd CIR

Legend
📍 N James St



**PHASE 1
ROAD CLOSED**

**18th St Intersection
CLOSED**

Daycare & Apartment
access maintained on
gravel adjacent to
construction area

Daycare & Apartment
access maintained on
20' gravel drive next to
construction area

The east, west, and south legs
of the N. James /Beaverbrooke
intersection will remain open

DETOUR ROUTE

