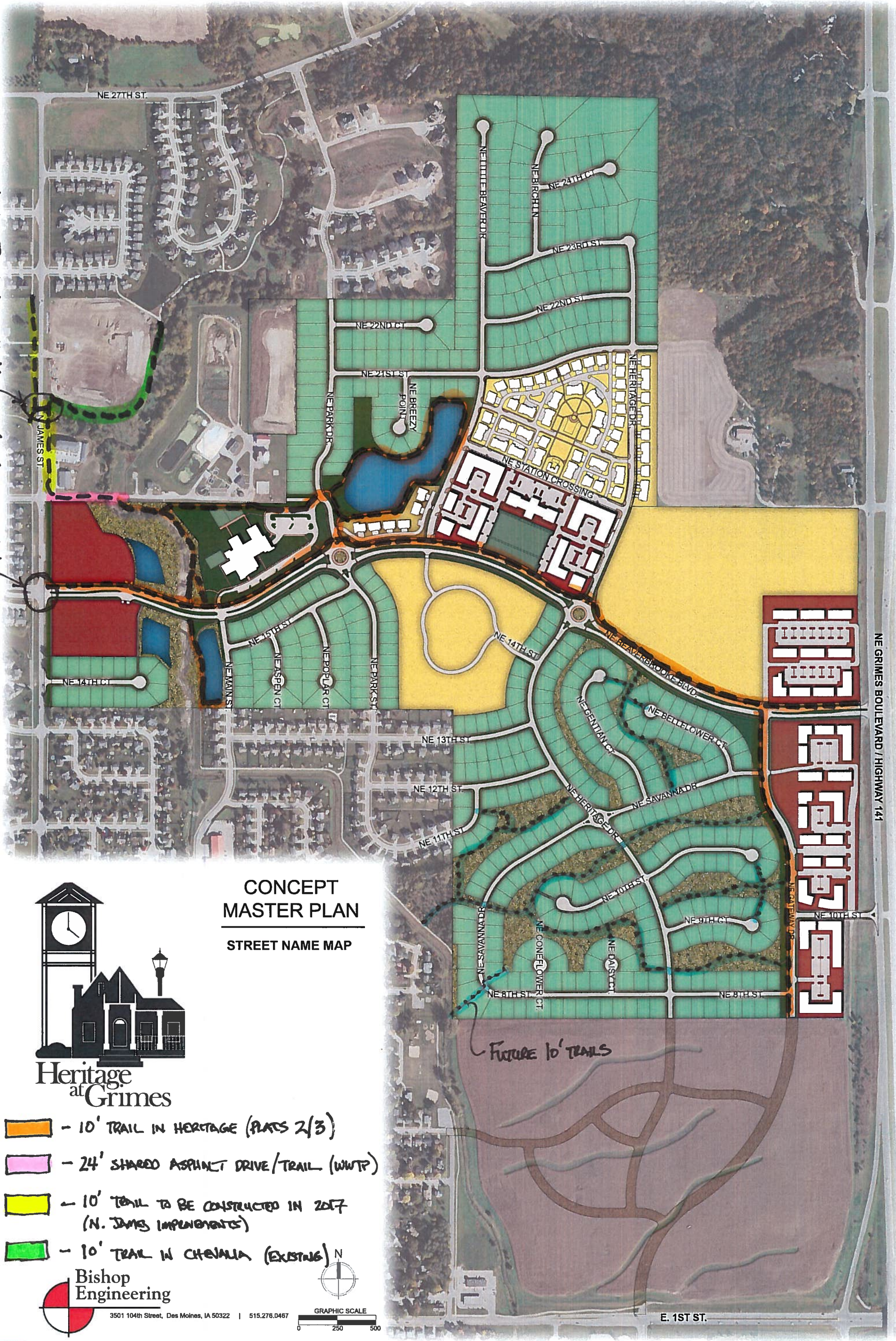


RT-GRADE TRAIL CROSSING
TRAFFIC SIGNAL (2017)



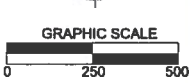
CONCEPT
MASTER PLAN
STREET NAME MAP



Heritage
at Grimes

- 10' TRAIL IN HERITAGE (PLATS 2/3)
- 24' SHARED ASPHALT DRIVE/TRAIL (WWTP)
- 10' TRAIL TO BE CONSTRUCTED IN 2017 (N. JAMES IMPROVEMENTS)
- 10' TRAIL IN CHEVALA (EXISTING)

Bishop
Engineering
3501 104th Street, Des Moines, IA 50322 | 515.276.0467



E. 1ST ST.